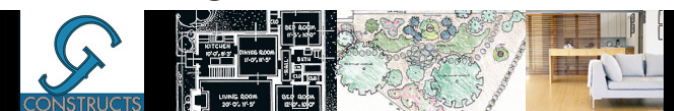




gjConstructs
HOUSE OF DESIGN

DESIGN MATTERS DETAILS MATTER



We have taken up the role of modernizing the California Modern, Cape Code, Craftsman, Saltbox, American Foursquare and Modern architectural styles and promoting an appealing affordable living option for middle-class families. Rather than reproducing traditional homes, gjConstructs refigures the design to include modern amenities to address your demands for increased privacy and up to date technology. Simplicity, functionality, and livability remain prevalent features of Gary's updated designs.

What Dreams Are Made Of

If you are like most people, you want a comfortable place to live, one that fits your tastes as well as your pocketbook. All of gjConstruct's custom home designs prove that style and good planning make your home economical to build, affordable to live in and a joy now and in the years to come.

A Wonderful World of Beauty

In your gjConstructs home, you live in a world of beauty... beauty that is achieved by grace and line, skillful combining of materials and harmonious blending of colours. "Simple Elegance" is the expression used by your friends in describing first impressions of a gjConstructs design.

A Wonderful World of Luxury

Luxury and good taste are brought within your financial reach through gjConstruct design, construction techniques and buying power. Private garden patios are a visual part of every major room; elegant master bedroom—dressing room—bathroom suites; extra room for hobbies, guests, homework; abundant storage ... and many more features...in the Wonderful World of gjConstructs.

A Wonderful World Of Convenience

Live your New Way of Life surrounded by every convenience imaginable! The carefully developed gjConstructs floor plans create more usable living space, inside and out, than is offered in any other home! Step-saving, work-saving space-arrangement construction and material innovations and the latest built-in appliances add time to your day and years to your life.

Imaginative New Floor Plan Concepts...For The Most Exciting gjConstructs Ever Built

In designing gjConstructs Homes we have taken an important step forward in creating plans which meet your each and every requirement...have one custom designed for your pattern of living!

Plan 201M Modern

Modern

This 1890 square foot two story three bedroom two and a half bath open modern design with attached double car garage fits on a 35 foot wide lot. Every attention has been given to lessening the visual impact of the garage door.

We give you the porch, a long missing feature in cold and hot climates alike. A much needed buffer zone that contributes to keeping your inner living spaces comfortable and your heating dollars in your pocket.

Another much needed but missing feature the mudroom. A space that when carefully designed for your families size, needs and habits works for you day-in-and-day-out. Serving both the front and garage entry points this mudroom is close enough to the kitchen to make unloading the weekly groceries from your car to your kitchen storage a snap.

It is an open floor plan with the exception of the added butlers pantry which by the way is another often missed benefit. The butlers pantry is where food prep including the washing,

cutting and plating happens. Also provides you with storage for all your diner ware. A place for the dishwasher and a deep sink that conveniently makes short work of cleanup. During the meal a sliding door hides the mess away from your guests eyes.

The kitchen stores everything and we mean everything behind closed

cabinet doors for an always neat and tidy look. Extra space between the kitchen work surfaces make room for not one but two or more chefs working together. The morning ritual of breakfast and lunch making is a breeze given the added space.

There is a lot to be said about spaces that have double use. The living and

dining space can easily be swapped giving you an intimate conversation space and a mini banquet hall for serving large gatherings. You have no trouble making room for the largest of dining tables. A single open area, this part of the house puts the emphasis on your families togetherness.

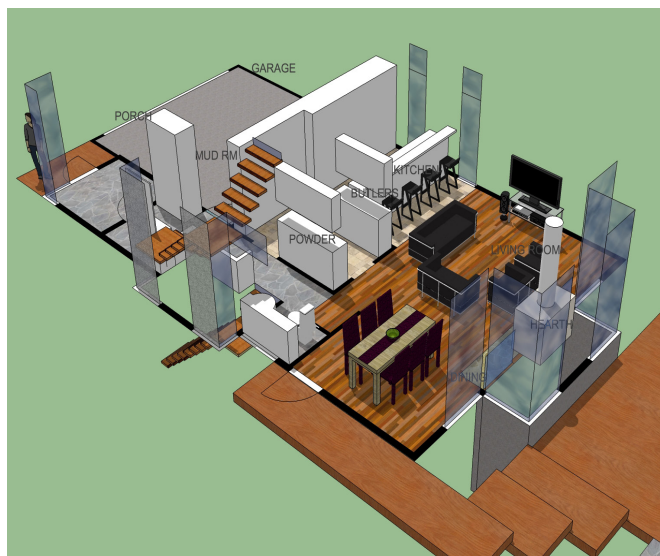
Not one but two light

wells bring abundant healthy sunshine into this home. The first one is the stairwell and the second one wraps around the fireplace focal point. Rich light streams into all areas of your home, even the basement.

The second floor boasts the master bedroom and well laid out bathroom en suit, two teenager sized bedrooms with student work areas and a bonus room for TV, games crafts or overnight guests. Choose an optional second floor laundry room.

If you are fortunate enough have a lot that slopes to the rear, you could build a walkout-type of basement and increase your living area by almost 30%. The location of the basement stairs ensures that this bonus living space fits naturally into the overall home's design.

© Gary Weisbrodt



Added Reading

- BLOG Design Matters Details Matter: gjconstructs.wordpress.com
- Facebook: Search "gjConstructs"
- Home: gjconstructs.weebly.com
- LinkedIn: linkedin.com/in/gjconstructs
- Houzz: houzz.com/pro/garyweisbrodt

Contact

306 351-0907
gjconstructs@mac.com